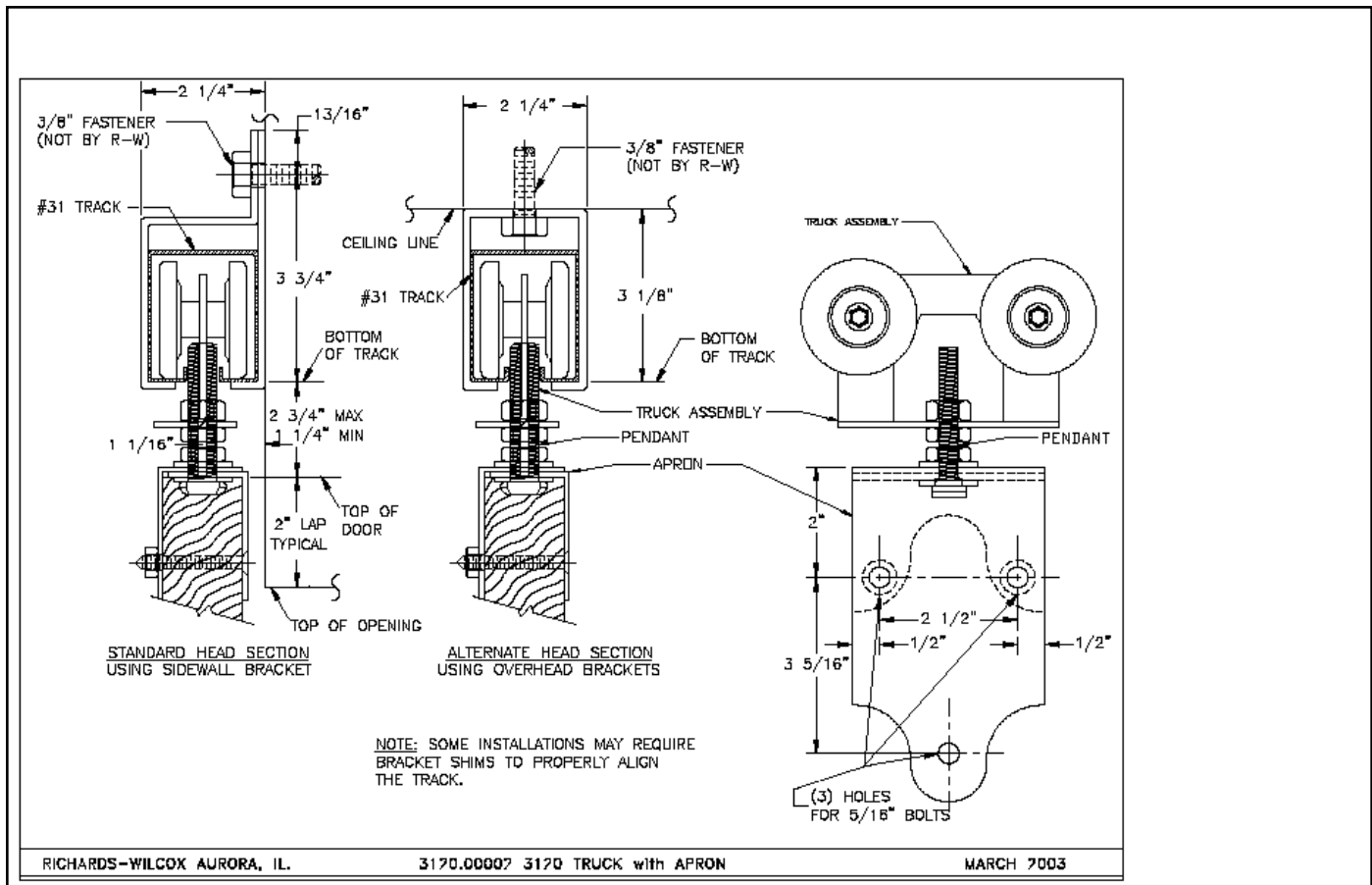


JOCAM'S STALLS-TACK ORGANIZERS-ACCESSORIES

WWW.JOCAMS.COM

1-866-422-1077

SLIDING DOOR HARDWARE ASSEMBLY:



1. Insert 1/2 x 3 1/2" bolt into the trolley as shown.
2. Thread the 3/8" thick nut onto the bolt approx. 1" from bolt head.
3. Thread the 1/4" thick nut onto the bolt so the nuts are 1/2" apart.
4. Insert bolts into the holes previously drilled into the top of door.
5. From the back of the door, place the back strap around the bolt and on top of the 1/4" thick nut.
6. From the front of the door, place the front strap around the bolt and on top of the back strap.
7. Mark two holes in the back and three in the front for drilling.
8. Drill three 5/16" holes completely thru the header board as marked.
9. Re-assemble straps and trolley as before and fasten with the 5/16" nuts and bolts.
10. Bolt heads should be on the back of the door.

SLIDING DOOR TRACK INSTALLATION:

1. Attach the hanging brackets to the door track.
2. Align the top edges of the hanging brackets with the top of the header board.
3. Ensuring that the end of the door track is even with the inside of the door corner post, fasten the track to the header board using three screws per bracket. Check for level. Do not install track ends until the completed door is hung.

ASSEMBLED SLIDING DOOR INSTALLATION:

1. Slide completed door into door track.
2. Install track ends.
3. Adjust and tighten strap bolt nuts to line up with grill work.
4. Fasten latch filler to door corner post.
5. Fasten door latch to door.
6. Fasten door roller to inside door post.
7. Fasten door stop to corner door post.